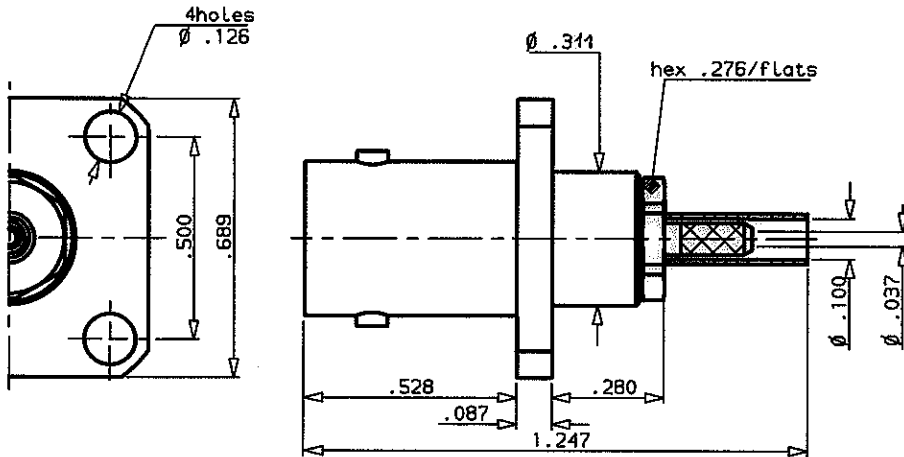


STRAIGHT FLANGE CABLE JACK-CRIMP TYPE
CABLE 2/50

SERIES: BNC

1 / 2

PEN 89-0132-713

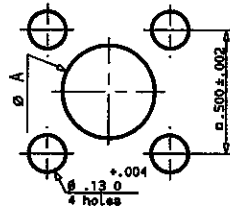


MOUNTING HOLE

front mounting: A = ϕ .441 0^{+0.004}

rear mounting: A = ϕ .335 0^{+0.004}

Perçage panneau



WEIGHT oz (g)

RG 178

CHARACTERISTICS

NOMINAL IMPEDANCE	50 Ω
FREQUENCY RANGE	0-4 GHz
TEMPERATURE RATING	-65/+165 °C
VSWR	ND Max
RF INSERTION LOSS	ND \sqrt{F} dB Maxi
VOLTAGE RATING	ND Vrms Maxi
DIELECTRIC WITHSTANDING VOLTAGE	1500 Vrms mini
INSULATION RESISTANCE	5000 Ma mini
HERMETIC SEAL	NA cc/s Atm.cm ³ /s
LEAKAGE (pressurized only)	NA psi MPa
-	-
-	-

STANDARDISATION

CABLE RETENTION	13.05 lb mini 58 N
CENTER CONTACT RETENTION	
Axial force - mating end	6.075 lb mini 27 N
Axial force - opposite end	6.075 lb mini 27 N
Torque (Min)	ND Inch.oz cm.N
RECOMMENDED TORQUES	
Mating	NA Inch. lb cm.N
Panel nut	NA Inch. lb cm.N
Clamp nut	7.974 Inch. lb 90 cm.N

CONSTRUCTION

CONNECTOR PARTS	MATERIALS	FINISH
BODY	BRASS	NICKEL
OUTER CONTACT	BRASS	NICKEL
CENTER CONTACT	BERYLLIUM COPPER	GOLD
INSULATORS	PTFE	-
-	-	-
-	-	-
-	-	-
-	-	-
-	-	-

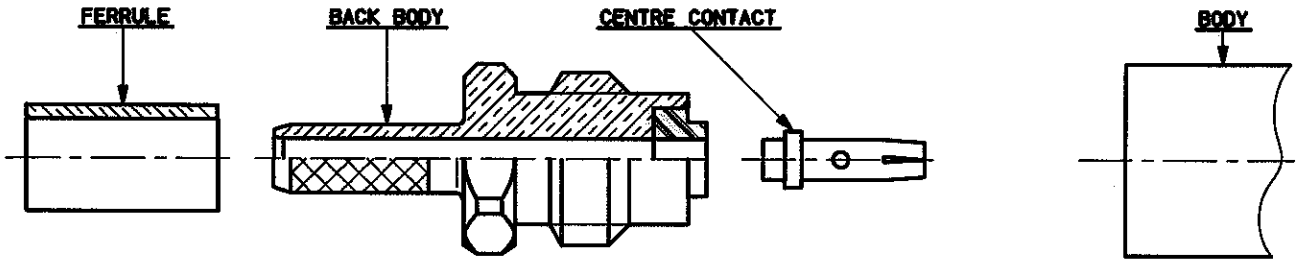
ISSUE	REVISION No	DESCRIPTION	BY	DATE
9412	94.01.021	ϕ .331 \rightarrow ϕ .311	BERTHEZ	22.3.94

Initiated on 28-MAY-90

The information given here is subject to change without notice. Design changes may be in order to improve the product.

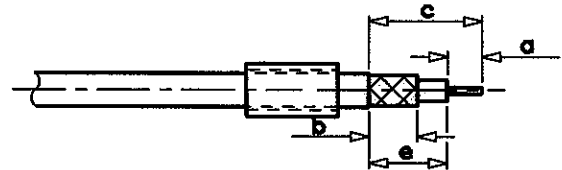


Superseded on -----



①

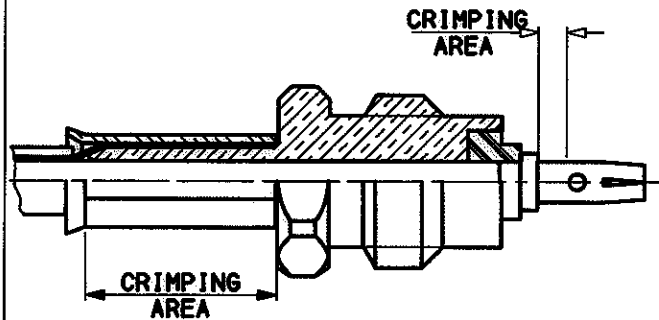
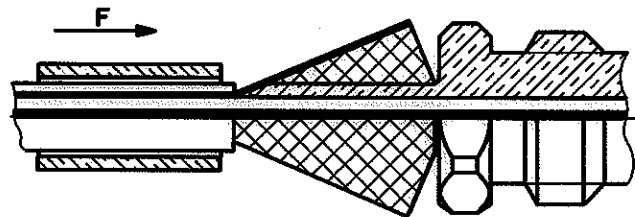
- 1-1 Slide the ferrule onto the cable .
- 1-2 Strip the cable .



Stripping	a	b	c	d	e
Inch	.177	.217	.65	-	.472
mm	4.5	5.5	16.5	-	12

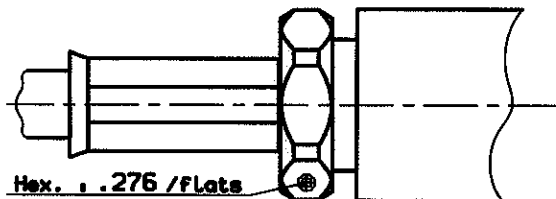
②

- 2-1 Fan the braid .
- 2-2 Slide the back body between dielectric and braid .
- 2-3 Slide on the centre contact until it bottoms against insulator .
- 2-4 Crimp centre contact
tool R 282 223 000 (Hex. . .068) or
tool M22520/5-01
+dies M22520/5- 11
- 2-5 Slide ferrule over the braid
(in direction F)
- 2-6 Crimp ferrule with crimping tool
R 282 211 000 (Hex. . .105) or
tool M22520/5-01
+ Dies M22520/5- 03



③

- 3-1 Screw sub-assembly into the connector body .
Recommended coupling torque
7.974 In.lb



ISSUE	REVISION No	DESCRIPTION	BY	DATE

Initiated on 31 May 90

The information given here is subject to change without notice. Design changes may be in order to improve the product.



Superseded on _____